



Cable ID: CAT6 OUTDOOR-PERM

Test Limit: TIA Cat 6 Perm. Link

Limits Version: V7.6

Date / Time: 12/22/2021 12:02:28

Operator: MORADI

Headroom 5 dB (NEXT 3,6-7,8)

Cable Type: Cat 6 F/UTP

NVP: 70.0%

Main: Versiv

S/N: 2934032

Software Version: V6.6 Build 2

Calibration Date: 01/25/2020

Adapter: DSX-5000 (DSX-PLA004)

S/N: 3126110

Remote: Versiv

S/N: 2468333

Software Version: V6.6 Build 2

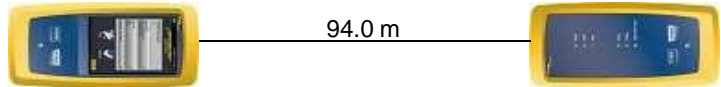
Calibration Date: 08/12/2013

Adapter: DSX-5000R (DSX-PLA004)

S/N: 3126109

Test Summary: PASS

Length (m), Limit 90.0	[Pair 4,5]	94.0
Prop. Delay (ns), Limit 498	[Pair 1,2]	471
Delay Skew (ns), Limit 44	[Pair 1,2]	23
Resistance (ohms)	[Pair 3,6]	15.08
Insertion Loss Margin (dB)	[Pair 7,8]	3.6
Frequency (MHz)	[Pair 7,8]	250.0
Limit (dB)	[Pair 7,8]	31.1

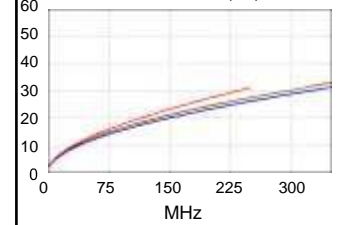


Wire Map (T568B)

PASS

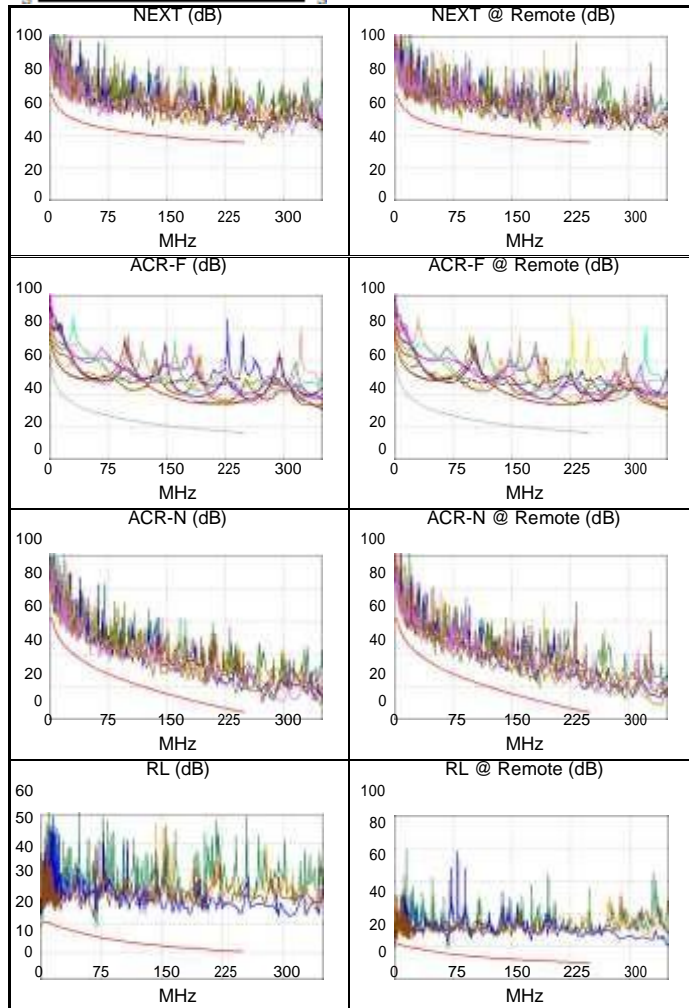


Insertion Loss (dB)



Worst Case Margin Worst Case Value

	MAIN	SR	MAIN	SR
PASS				
Worst Pair	3,6-7,8	3,6-7,8	3,6-7,8	3,6-7,8
NEXT (dB)	6.3	6.1	7.1	6.1
Freq. (MHz)	132.5	184.5	239.0	184.5
Limit (dB)	39.9	37.5	35.7	37.5
Worst Pair	3,6	7,8	3,6	3,6
PS NEXT (dB)	8.0	7.6	8.1	9.5
Freq. (MHz)	15.3	184.0	250.0	247.0
Limit (dB)	52.6	34.9	32.7	32.8
PASS				
Worst Pair	3,6-4,5	4,5-3,6	3,6-4,5	4,5-3,6
ACR-F (dB)	14.9	14.9	16.2	16.2
Freq. (MHz)	8.3	9.0	223.0	223.0
Limit (dB)	45.9	45.1	17.2	17.2
Worst Pair	3,6	3,6	3,6	3,6
PS ACR-F (dB)	16.4	16.3	17.8	17.2
Freq. (MHz)	1.0	1.5	228.5	214.5
Limit (dB)	61.2	57.7	14.0	14.6
N/A				
Worst Pair	4,5-7,8	3,6-7,8	3,6-7,8	1,2-7,8
ACR-N (dB)	7.7	7.7	10.4	12.9
Freq. (MHz)	64.3	51.8	239.0	244.0
Limit (dB)	30.3	33.5	5.4	4.8
Worst Pair	3,6	4,5	7,8	7,8
PS ACR-N (dB)	8.6	9.2	12.6	13.1
Freq. (MHz)	15.1	15.9	250.0	247.5
Limit (dB)	45.8	45.3	1.6	1.9
PASS				
Worst Pair	3,6	3,6	3,6	3,6
RL (dB)	4.0	3.6	4.0	3.6
Freq. (MHz)	69.3	68.8	69.3	68.8
Limit (dB)	15.6	15.6	15.6	15.6



Compliant Network Standards:

10BASE-T	100BASE-TX	100BASE-T4
1000BASE-T	2.5GBASE-T	5GBASE-T
ATM-25	ATM-51	ATM-155
100VG-AnyLan	TR-4	TR-16 Active
TR-16 Passive		