



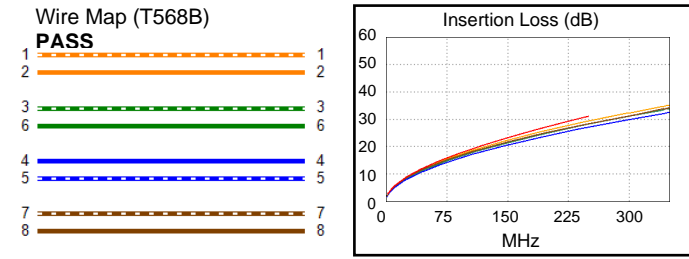
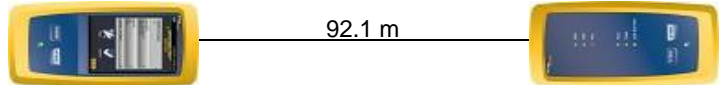
Cable ID: S1-NEXANS CAT6 UTP ER-PERM

Test Limit: TIA Cat 6 Perm. Link
Limits Version: V7.6
Date / Time: 06/23/2022 10:50:55 AM
Operator: MORADI
Headroom 4.0 dB (NEXT 3,6-4,5)
Cable Type: Cat 6 U/UTP
NVP: 69.0%

Main: Versiv
S/N: 2934032
Software Version: V6.6 Build 2
Calibration Date: 01/25/2020
Adapter: DSX-5000 (DSX-PLA004)
S/N: 3126110

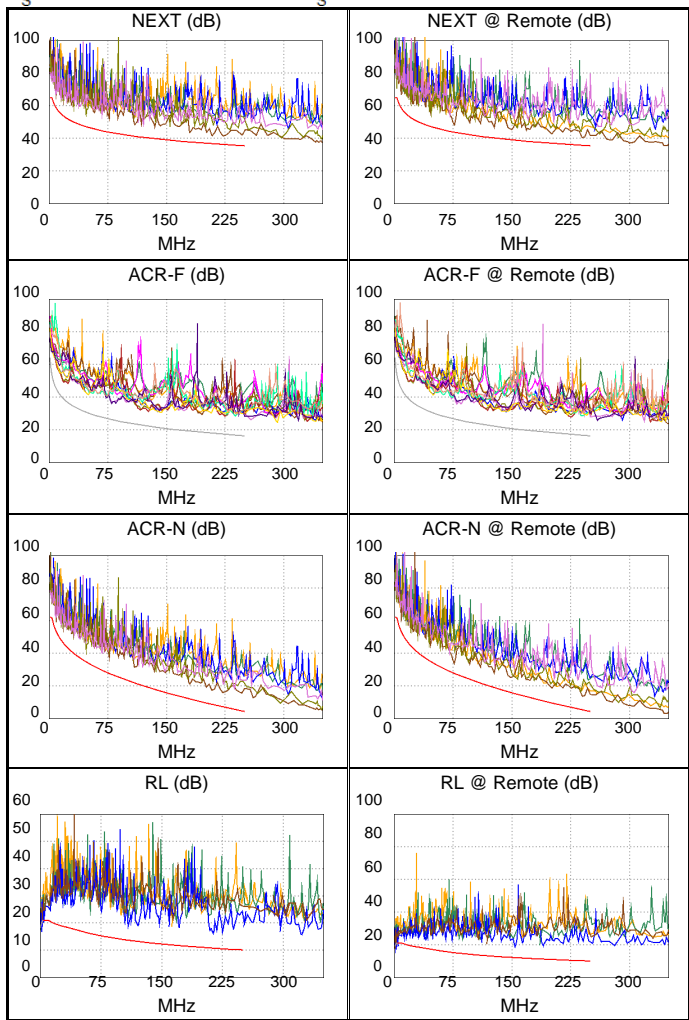
Test Summary: PASS
Remote: Versiv
S/N: 2468333
Software Version: V6.6 Build 2
Calibration Date: 08/12/2013
Adapter: DSX-5000R (DSX-PLA004)
S/N: 3126109

Length (m), Limit 90.0	[Pair 4,5]	92.1
Prop. Delay (ns), Limit 498	[Pair 1,2]	466
Delay Skew (ns), Limit 44	[Pair 1,2]	21
Resistance (ohms)	[Pair 7,8]	19.03
Insertion Loss Margin (dB)	[Pair 1,2]	1.7
Frequency (MHz)	[Pair 1,2]	250.0
Limit (dB)	[Pair 1,2]	31.1



	Worst Case Margin		Worst Case Value	
PASS	MAIN	SR	MAIN	SR
Worst Pair	3,6-4,5	3,6-4,5	3,6-4,5	3,6-4,5
NEXT (dB)	5.0	4.0	5.1	4.0
Freq. (MHz)	209.0	241.0	222.0	241.0
Limit (dB)	36.6	35.6	36.2	35.6
Worst Pair	3,6	3,6	4,5	3,6
PS NEXT (dB)	6.9	5.4	6.9	5.4
Freq. (MHz)	209.0	239.5	222.5	239.5
Limit (dB)	34.0	33.0	33.5	33.0
PASS	MAIN	SR	MAIN	SR
Worst Pair	4,5-3,6	4,5-3,6	7,8-3,6	4,5-3,6
ACR-F (dB)	9.0	9.0	12.0	10.6
Freq. (MHz)	127.0	118.5	250.0	227.0
Limit (dB)	22.1	22.7	16.2	17.1
Worst Pair	3,6	7,8	3,6	7,8
PS ACR-F (dB)	10.4	10.0	12.5	11.3
Freq. (MHz)	145.5	140.0	250.0	237.5
Limit (dB)	17.9	18.3	13.2	13.7
N/A	MAIN	SR	MAIN	SR
Worst Pair	3,6-7,8	3,6-4,5	3,6-4,5	3,6-4,5
ACR-N (dB)	7.9	6.1	10.7	7.9
Freq. (MHz)	47.3	76.8	247.0	241.0
Limit (dB)	34.7	27.6	4.5	5.1
Worst Pair	4,5	3,6	3,6	3,6
PS ACR-N (dB)	8.2	7.5	11.0	8.3
Freq. (MHz)	8.8	76.8	247.0	240.5
Limit (dB)	51.2	25.1	1.9	2.6
PASS	MAIN	SR	MAIN	SR
Worst Pair	4,5	4,5	4,5	4,5
RL (dB)	1.1 *	0.7 *	5.4	6.6
Freq. (MHz)	3.8	3.8	213.5	154.0
Limit (dB)	21.0	21.0	10.7	12.1

Compliant Network Standards:
 10BASE-T 100BASE-TX 100BASE-T4
 1000BASE-T 2.5GBASE-T 5GBASE-T
 ATM-25 ATM-51 ATM-155
 100VG-AnyLan TR-4 TR-16 Active
 TR-16 Passive



* Measurement is within the accuracy limits of the instrument.