



**Cable ID: 015**

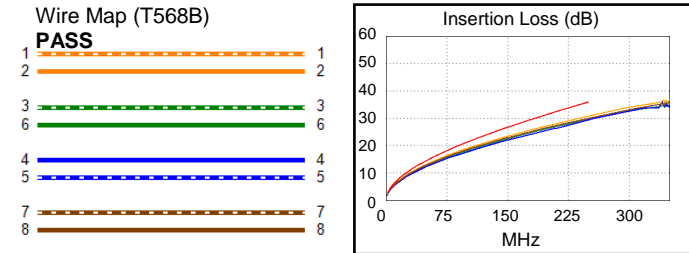
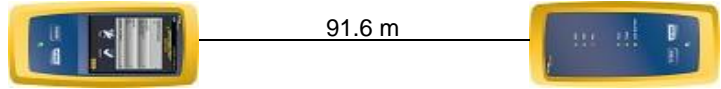
Date / Time: 08/31/2020 11:13:37 AM  
**Headroom 7.9 dB (NEXT 3,6-7,8)**  
**Test Limit: TIA Cat 6 Channel**  
 Cable Type: Cat 6 U/UTP  
 NVP: 69.0%

Software Version: V6.2 Build 1  
 Limits Version: V7.2  
 Calibration Start Date:  
 Main (Module): 10/16/2019  
 Remote (Module): 10/16/2019

**Test Summary: PASS**

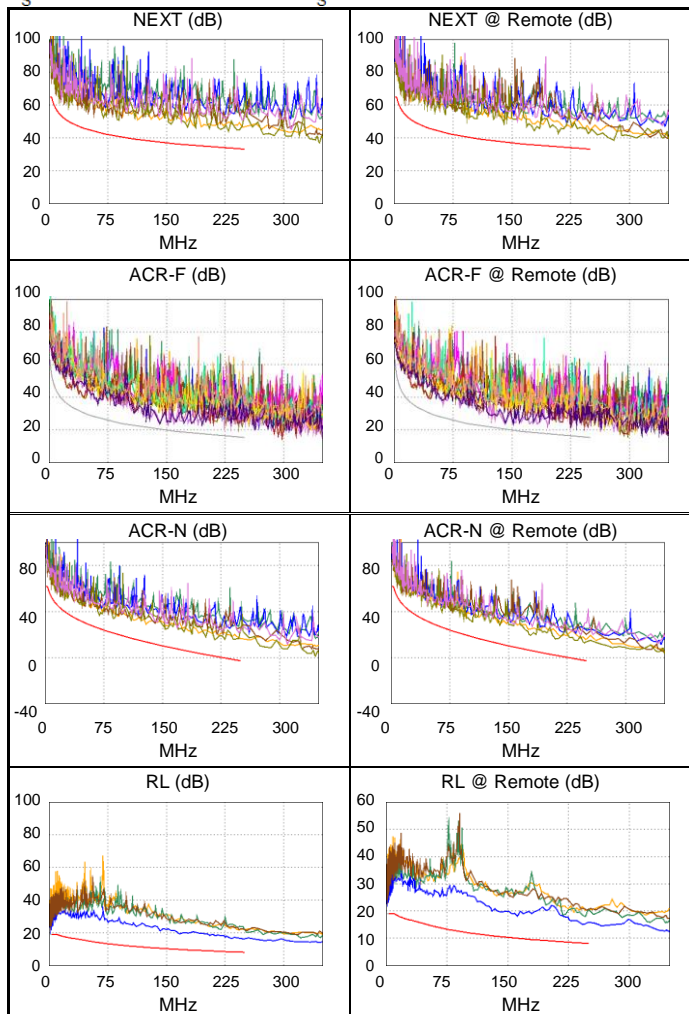
Model: DSX-8000  
 Main S/N: 1915092  
 Remote S/N: 1915394  
 Main Adapter: DSX-PLA804  
 Remote Adapter: DSX-PLA804

Length (m), Limit 100.0	[Pair 4,5]	91.6
Prop. Delay (ns), Limit 555	[Pair 1,2]	460
Delay Skew (ns), Limit 50	[Pair 1,2]	17
Resistance (ohms)	[Pair 1,2]	17.30
Insertion Loss Margin (dB)	[Pair 1,2]	4.9
Frequency (MHz)	[Pair 1,2]	247.5
Limit (dB)	[Pair 1,2]	35.7



Worst Case Margin Worst Case Value

	MAIN	SR	MAIN	SR
<b>PASS</b>				
Worst Pair	3,6-7,8	3,6-7,8	3,6-7,8	3,6-7,8
<b>NEXT (dB)</b>	9.0	7.9	9.2	9.1
Freq. (MHz)	25.3	12.4	217.0	248.0
Limit (dB)	50.0	55.1	34.2	33.2
Worst Pair	3,6	3,6	3,6	3,6
<b>PS NEXT (dB)</b>	9.8	9.8	10.5	9.9
Freq. (MHz)	12.4	12.4	220.5	248.5
Limit (dB)	52.5	52.5	31.1	30.2
<b>PASS</b>				
Worst Pair	7,8-3,6	3,6-7,8	3,6-7,8	7,8-3,6
<b>ACR-F (dB)</b>	3.5	3.2	4.5	5.1
Freq. (MHz)	141.5	142.0	238.0	238.0
Limit (dB)	20.2	20.2	15.7	15.7
Worst Pair	3,6	7,8	7,8	3,6
<b>PS ACR-F (dB)</b>	6.0	5.5	7.4	6.3
Freq. (MHz)	141.5	141.5	238.0	238.0
Limit (dB)	17.2	17.2	12.7	12.7
<b>N/A</b>				
Worst Pair	3,6-7,8	3,6-7,8	3,6-7,8	3,6-7,8
<b>ACR-N (dB)</b>	9.9	8.7	17.5	15.1
Freq. (MHz)	12.3	12.4	243.5	248.0
Limit (dB)	48.1	48.0	-2.1	-2.6
Worst Pair	3,6	3,6	3,6	3,6
<b>PS ACR-N (dB)</b>	10.8	10.8	18.6	16.4
Freq. (MHz)	12.4	12.4	248.5	248.5
Limit (dB)	45.4	45.4	-5.6	-5.6
<b>PASS</b>				
Worst Pair	4,5	4,5	4,5	4,5
<b>RL (dB)</b>	7.5	6.5	8.1	6.5
Freq. (MHz)	3.8	241.5	250.0	241.5
Limit (dB)	19.0	8.2	8.0	8.2



Compliant Network Standards:  
 10BASE-T      100BASE-TX      100BASE-T4  
 1000BASE-T    2.5GBASE-T      5GBASE-T  
 ATM-25        ATM-51            ATM-155  
 100VG-AnyLan    TR-4              TR-16 Active  
 TR-16 Passive