



Cable ID: 001

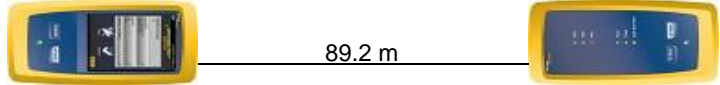
Date / Time: 09/26/2020 05:29:12 PM
Headroom 3.9 dB (NEXT 3,6-7,8)
Test Limit: TIA Cat 6 Channel
 Cable Type: *CAT6 SF/UTP*
 NVP: 67.0%

Software Version: V6.2 Build 1
 Limits Version: V7.2
 Calibration Start Date:
 Main (Module): 10/16/2019
 Remote (Module): 10/16/2019

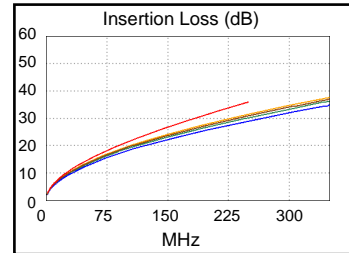
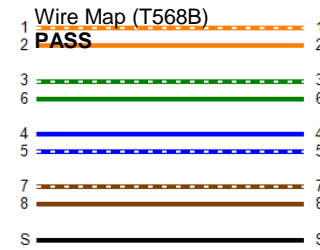
Test Summary: PASS

Model: DSX-8000
 Main S/N: 1915092
 Remote S/N: 1915394
 Main Adapter: DSX-PLA804
 Remote Adapter: DSX-PLA804

Length (m), Limit 100.0	[Pair 4,5]	89.2
Prop. Delay (ns), Limit 555	[Pair 1,2]	465
Delay Skew (ns), Limit 50	[Pair 1,2]	21
Resistance (ohms)	[Pair 1,2]	16.55
Insertion Loss Margin (dB)	[Pair 1,2]	4.4
Frequency (MHz)	[Pair 1,2]	250.0
Limit (dB)	[Pair 1,2]	35.9

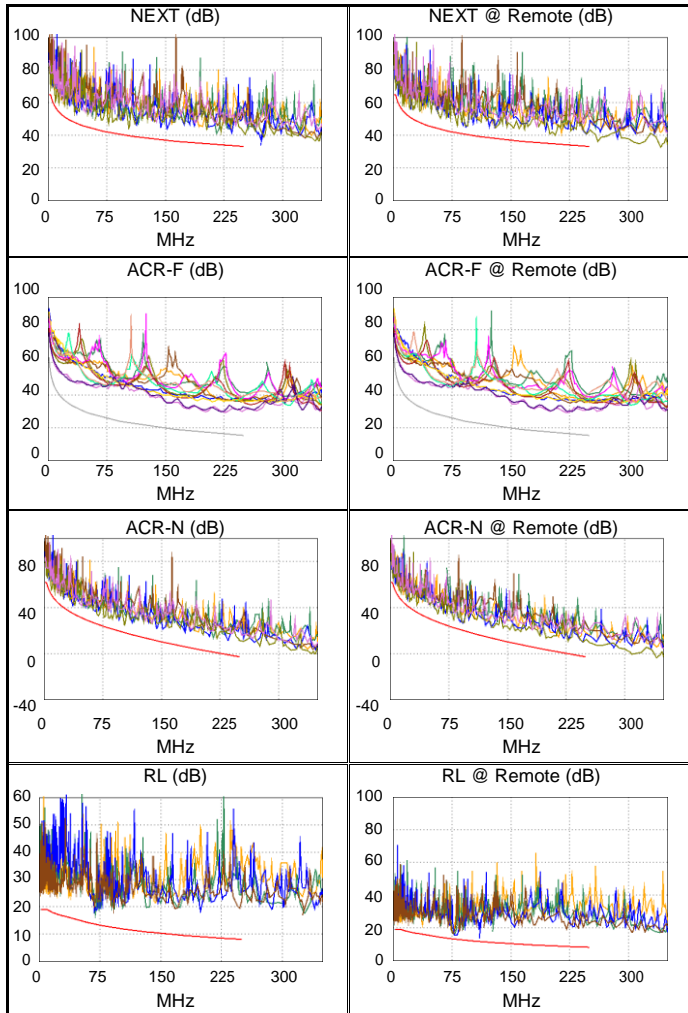


89.2 m



Worst Case Margin Worst Case Value

	MAIN	SR	MAIN	SR
PASS				
Worst Pair	3,6-7,8	3,6-7,8	1,2-4,5	3,6-7,8
NEXT (dB)	3.9	4.2	6.5	5.2
Freq. (MHz)	9.1	13.8	216.5	207.0
Limit (dB)	57.2	54.3	34.2	34.5
Worst Pair	7,8	7,8	4,5	7,8
PS NEXT (dB)	5.8	4.4	8.0	7.4
Freq. (MHz)	37.5	93.0	216.5	248.0
Limit (dB)	44.4	37.6	31.2	30.2
PASS				
Worst Pair	3,6-7,8	3,6-7,8	3,6-7,8	3,6-7,8
ACR-F (dB)	12.5	12.8	13.1	12.8
Freq. (MHz)	201.0	223.0	228.0	223.0
Limit (dB)	17.2	16.3	16.1	16.3
Worst Pair	7,8	7,8	7,8	7,8
PS ACR-F (dB)	14.9	14.9	15.1	14.9
Freq. (MHz)	201.0	223.0	228.0	223.0
Limit (dB)	14.2	13.3	13.1	13.3
N/A				
Worst Pair	3,6-7,8	3,6-7,8	3,6-7,8	1,2-7,8
ACR-N (dB)	4.2	4.5	13.5	12.2
Freq. (MHz)	9.1	3.4	250.0	248.0
Limit (dB)	51.2	60.5	-2.8	-2.6
Worst Pair	7,8	7,8	1,2	7,8
PS ACR-N (dB)	6.3	6.2	13.3	12.4
Freq. (MHz)	9.1	93.0	235.0	248.0
Limit (dB)	48.6	17.2	-4.0	-5.6
PASS				
Worst Pair	3,6	3,6	3,6	3,6
RL (dB)	3.5	1.5	3.5	1.5
Freq. (MHz)	69.0	76.5	69.0	76.5
Limit (dB)	13.6	13.2	13.6	13.2



Compliant Network Standards:
 10BASE-T 100BASE-TX 100BASE-T4
 1000BASE-T 2.5GBASE-T 5GBASE-T
 ATM-25 ATM-51 ATM-155
 100VG-AnyLan TR-4 TR-16 Active
 TR-16 Passive