



Cable ID: 179-51-F/UTP-PVC-04

Test Limit: TIA Cat 6 Channel

Limits Version: V7.5
Date / Time: 09/07/2021 08:17:18 AM
Operator: MARZBAN

Headroom 6.5 dB (NEXT 1,2-4,5)

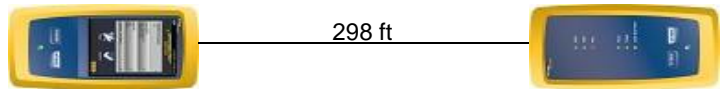
Cable Type: Cat 6 F/UTP
NVP: 70.0%

Main: Versiv
S/N: 2968377
Software Version: V6.5 Build 5
Calibration Date: 09/15/2019
Adapter: DSX-5000 (DSX-PLA004)
S/N: 4647128

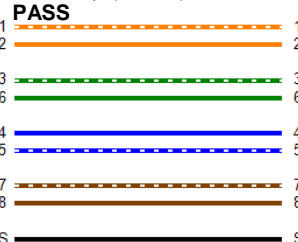
Test Summary: PASS

Remote: Versiv
S/N: 2968378
Software Version: V6.5 Build 5
Calibration Date: 09/15/2019
Adapter: DSX-5000R (DSX-PLA004)
S/N: 4647127

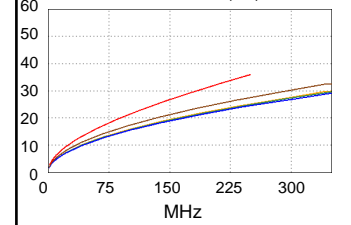
Length (ft), Limit 328	[Pair 4,5]	298
Prop. Delay (ns), Limit 555	[Pair 7,8]	469
Delay Skew (ns), Limit 50	[Pair 7,8]	37
Resistance (ohms)	[Pair 7,8]	17.80
Insertion Loss Margin (dB)	[Pair 7,8]	8.5
Frequency (MHz)	[Pair 7,8]	250.0
Limit (dB)	[Pair 7,8]	35.9



Wire Map (T568B)

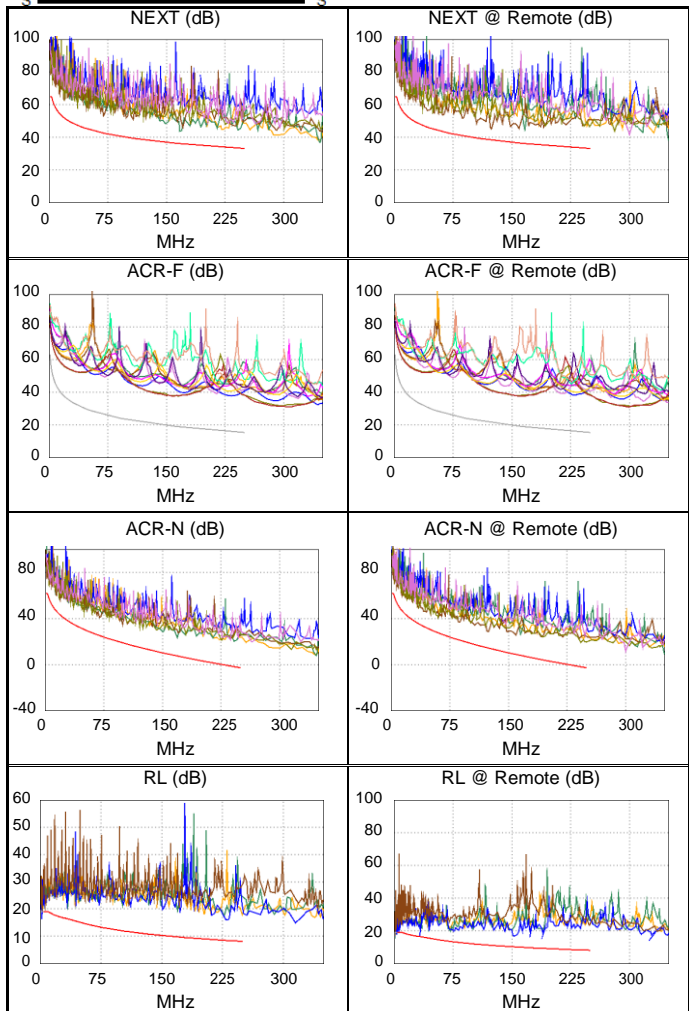


Insertion Loss (dB)



Worst Case Margin Worst Case Value

	MAIN	SR	MAIN	SR
PASS				
Worst Pair	1,2-4,5	3,6-4,5	1,2-4,5	1,2-4,5
NEXT (dB)	6.5	6.7	6.5	8.6
Freq. (MHz)	168.0	123.5	168.0	166.5
Limit (dB)	36.1	38.4	36.1	36.1
Worst Pair	4,5	3,6	4,5	3,6
PS NEXT (dB)	9.0	9.0	9.0	12.3
Freq. (MHz)	168.5	123.5	168.5	243.0
Limit (dB)	33.1	35.5	33.1	30.4
PASS				
Worst Pair	3,6-4,5	4,5-3,6	3,6-4,5	4,5-3,6
ACR-F (dB)	18.0	17.9	18.2	18.5
Freq. (MHz)	9.0	14.6	156.5	165.5
Limit (dB)	44.2	40.0	19.4	18.9
Worst Pair	3,6	3,6	3,6	3,6
PS ACR-F (dB)	18.7	18.8	20.2	20.8
Freq. (MHz)	1.3	1.8	172.5	177.5
Limit (dB)	58.3	55.4	15.5	15.3
N/A				
Worst Pair	3,6-7,8	3,6-4,5	1,2-4,5	3,6-7,8
ACR-N (dB)	13.3	12.2	22.2	21.1
Freq. (MHz)	4.3	13.8	241.5	243.5
Limit (dB)	58.5	46.9	-1.8	-2.1
Worst Pair	3,6	3,6	4,5	7,8
PS ACR-N (dB)	15.1	13.9	23.7	23.7
Freq. (MHz)	4.3	49.8	241.5	248.5
Limit (dB)	56.0	27.7	-4.8	-5.6
PASS				
Worst Pair	7,8	3,6	4,5	4,5
RL (dB)	2.4	2.0	7.1	6.2
Freq. (MHz)	6.6	3.8	232.0	152.5
Limit (dB)	19.0	19.0	8.3	10.2



Compliant Network Standards:
 10BASE-T 100BASE-TX 100BASE-T4
 1000BASE-T 2.5GBASE-T 5GBASE-T
 ATM-25 ATM-51 ATM-155
 100VG-AnyLan TR-4 TR-16 Active
 TR-16 Passive