



**Cable ID: 179-51-F/UTP-PVC-04**

**Test Limit: TIA Cat 6 Channel**

Limits Version: V7.5  
Date / Time: 09/07/2021 08:17:18 AM  
Operator: MARZBAN

**Headroom 6.5 dB (NEXT 1,2-4,5)**

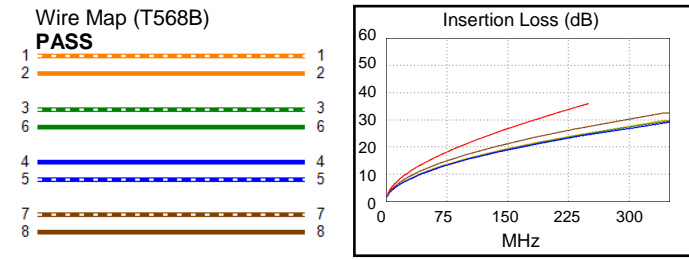
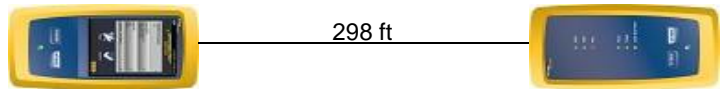
Cable Type: Cat 6 F/UTP  
NVP: 70.0%

Main: Versiv  
S/N: 2968377  
Software Version: V6.5 Build 5  
Calibration Date: 09/15/2019  
Adapter: DSX-5000 (DSX-PLA004)  
S/N: 4647128

**Test Summary: PASS**

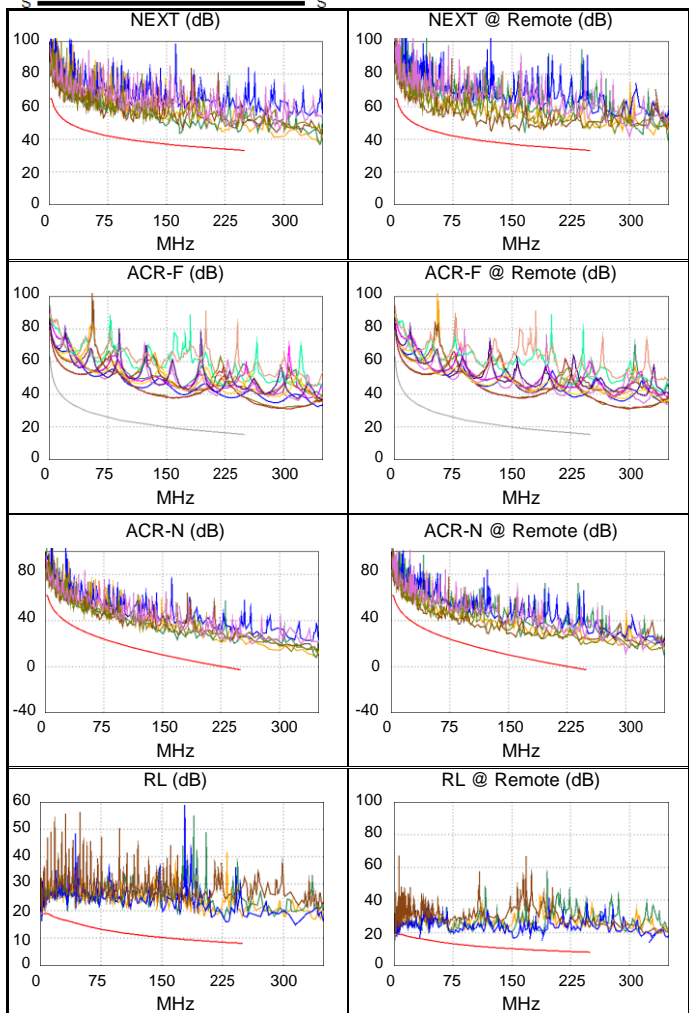
Remote: Versiv  
S/N: 2968378  
Software Version: V6.5 Build 5  
Calibration Date: 09/15/2019  
Adapter: DSX-5000R (DSX-PLA004)  
S/N: 4647127

Length (ft), Limit 328	[Pair 4,5]	298
Prop. Delay (ns), Limit 555	[Pair 7,8]	469
Delay Skew (ns), Limit 50	[Pair 7,8]	37
Resistance (ohms)	[Pair 7,8]	17.80
Insertion Loss Margin (dB)	[Pair 7,8]	8.5
Frequency (MHz)	[Pair 7,8]	250.0
Limit (dB)	[Pair 7,8]	35.9



Worst Case Margin Worst Case Value

	MAIN	SR	MAIN	SR
<b>PASS</b>				
Worst Pair	1,2-4,5	3,6-4,5	1,2-4,5	1,2-4,5
<b>NEXT (dB)</b>	6.5	6.7	6.5	8.6
Freq. (MHz)	168.0	123.5	168.0	166.5
Limit (dB)	36.1	38.4	36.1	36.1
Worst Pair	4,5	3,6	4,5	3,6
<b>PS NEXT (dB)</b>	9.0	9.0	9.0	12.3
Freq. (MHz)	168.5	123.5	168.5	243.0
Limit (dB)	33.1	35.5	33.1	30.4
<b>PASS</b>				
Worst Pair	3,6-4,5	4,5-3,6	3,6-4,5	4,5-3,6
<b>ACR-F (dB)</b>	18.0	17.9	18.2	18.5
Freq. (MHz)	9.0	14.6	156.5	165.5
Limit (dB)	44.2	40.0	19.4	18.9
Worst Pair	3,6	3,6	3,6	3,6
<b>PS ACR-F (dB)</b>	18.7	18.8	20.2	20.8
Freq. (MHz)	1.3	1.8	172.5	177.5
Limit (dB)	58.3	55.4	15.5	15.3
<b>N/A</b>				
Worst Pair	3,6-7,8	3,6-4,5	1,2-4,5	3,6-7,8
<b>ACR-N (dB)</b>	13.3	12.2	22.2	21.1
Freq. (MHz)	4.3	13.8	241.5	243.5
Limit (dB)	58.5	46.9	-1.8	-2.1
Worst Pair	3,6	3,6	4,5	7,8
<b>PS ACR-N (dB)</b>	15.1	13.9	23.7	23.7
Freq. (MHz)	4.3	49.8	241.5	248.5
Limit (dB)	56.0	27.7	-4.8	-5.6
<b>PASS</b>				
Worst Pair	7,8	3,6	4,5	4,5
<b>RL (dB)</b>	2.4	2.0	7.1	6.2
Freq. (MHz)	6.6	3.8	232.0	152.5
Limit (dB)	19.0	19.0	8.3	10.2



Compliant Network Standards:  
 10BASE-T      100BASE-TX      100BASE-T4  
 1000BASE-T    2.5GBASE-T      5GBASE-T  
 ATM-25        ATM-51            ATM-155  
 100VG-AnyLan    TR-4              TR-16 Active  
 TR-16 Passive