



Cable ID: NEXANS CAT6 SFTP LSZH-CH

Test Limit: TIA Cat 6 Channel

Limits Version: V7.5

Date / Time: 06/15/2021 14:36:18

Operator: MORADI

Headroom 0.5 dB (NEXT 4,5-7,8)

Cable Type: Cat 6 F/UTP

NVP: 70.0%

Main: Versiv

S/N: 2934032

Software Version: V6.5 Build 5

Calibration Date: 01/25/2020

Adapter: DSX-5000 (DSX-CHA004)

S/N: 3078296

Test Summary: PASS

Remote: Versiv

S/N: 2934034

Software Version: V6.5 Build 5

Calibration Date: 01/25/2020

Adapter: DSX-5000R (DSX-CHA004)

S/N: 3078276

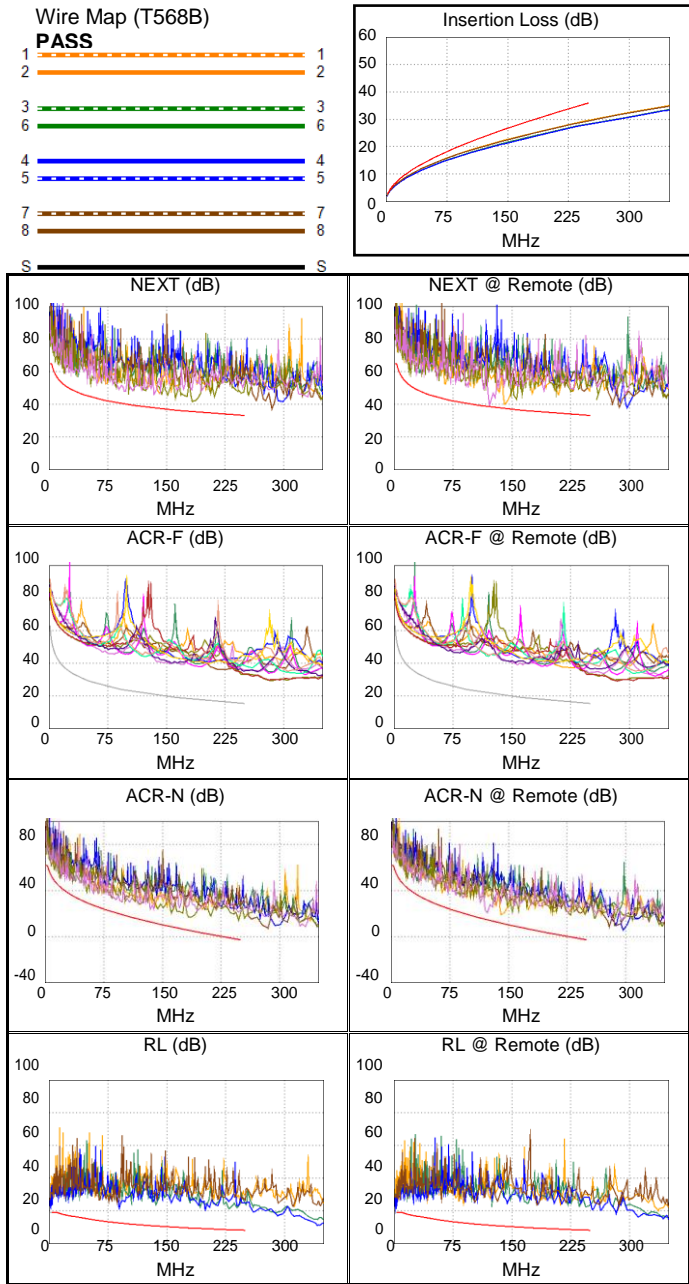
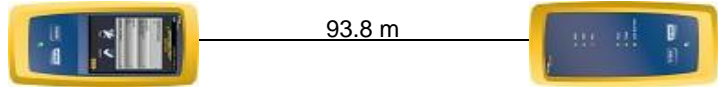
Length (m), Limit 100.0	[Pair 4,5]	93.8
Prop. Delay (ns), Limit 555	[Pair 1,2]	469
Delay Skew (ns), Limit 50	[Pair 1,2]	22
Resistance (ohms)	[Pair 7,8]	17.98
Insertion Loss Margin (dB)	[Pair 1,2]	6.2
Frequency (MHz)	[Pair 1,2]	250.0
Limit (dB)	[Pair 1,2]	35.9

Worst Case Margin Worst Case Value

PASS	MAIN	SR	MAIN	SR
Worst Pair	3,6-7,8	4,5-7,8	3,6-7,8	4,5-7,8
NEXT (dB)	6.2	0.5 *	6.2	0.5
Freq. (MHz)	183.0	122.0	183.0	122.0
Limit (dB)	35.4	38.5	35.4	38.5
Worst Pair	7,8	4,5	7,8	4,5
PS NEXT (dB)	8.4	3.3	8.4	3.3
Freq. (MHz)	183.0	122.0	183.0	122.0
Limit (dB)	32.5	35.6	32.5	35.6
PASS	MAIN	SR	MAIN	SR
Worst Pair	3,6-4,5	4,5-3,6	3,6-4,5	4,5-3,6
ACR-F (dB)	17.5	17.5	17.5	17.5
Freq. (MHz)	249.5	249.5	249.5	249.5
Limit (dB)	15.3	15.3	15.3	15.3
Worst Pair	4,5	3,6	3,6	3,6
PS ACR-F (dB)	17.9	18.0	18.5	18.6
Freq. (MHz)	1.0	1.0	250.0	249.5
Limit (dB)	60.3	60.3	12.3	12.3
N/A	MAIN	SR	MAIN	SR
Worst Pair	3,6-7,8	4,5-7,8	3,6-7,8	3,6-7,8
ACR-N (dB)	8.0	4.1	16.6	19.1
Freq. (MHz)	19.3	122.0	247.5	229.5
Limit (dB)	43.1	14.7	-2.5	-0.4
Worst Pair	7,8	7,8	7,8	7,8
PS ACR-N (dB)	9.7	7.0	18.6	20.1
Freq. (MHz)	19.1	122.0	247.5	229.5
Limit (dB)	40.5	11.8	-5.5	-3.4
PASS	MAIN	SR	MAIN	SR
Worst Pair	4,5	4,5	3,6	3,6
RL (dB)	7.7	6.4	11.8	14.0
Freq. (MHz)	3.8	3.8	230.0	244.5
Limit (dB)	19.0	19.0	8.4	8.1

Compliant Network Standards:

10BASE-T	100BASE-TX	100BASE-T4
1000BASE-T	2.5GBASE-T	5GBASE-T
ATM-25	ATM-155	ATM-155
100VG-AnyLan	TR-4	TR-16 Active
TR-16 Passive		



* Measurement is within the accuracy limits of the instrument.



Cable ID: NEXANS CAT6 SFTP LSZH-CH2

Test Limit: TIA Cat 6 Channel

Limits Version: V7.5

Date / Time: 06/15/2021 14:43:00

Operator: MORADI

Headroom 0.5 dB (NEXT 4,5-7,8)

Cable Type: Cat 6 F/UTP

NVP: 70.0%

Main: Versiv

S/N: 2934032

Software Version: V6.5 Build 5

Calibration Date: 01/25/2020

Adapter: DSX-5000 (DSX-CHA004)

S/N: 3078296

Test Summary: PASS

Remote: Versiv

S/N: 2934034

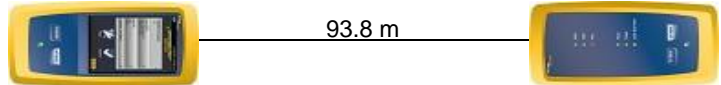
Software Version: V6.5 Build 5

Calibration Date: 01/25/2020

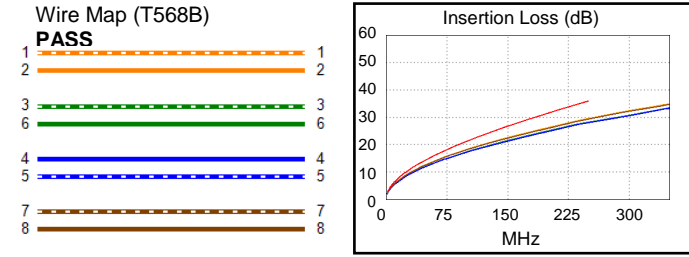
Adapter: DSX-5000R (DSX-CHA004)

S/N: 3078276

Length (m), Limit 100.0	[Pair 4,5]	93.8
Prop. Delay (ns), Limit 555	[Pair 1,2]	469
Delay Skew (ns), Limit 50	[Pair 1,2]	22
Resistance (ohms)	[Pair 1,2]	17.31
Insertion Loss Margin (dB)	[Pair 1,2]	6.4
Frequency (MHz)	[Pair 1,2]	250.0
Limit (dB)	[Pair 1,2]	35.9

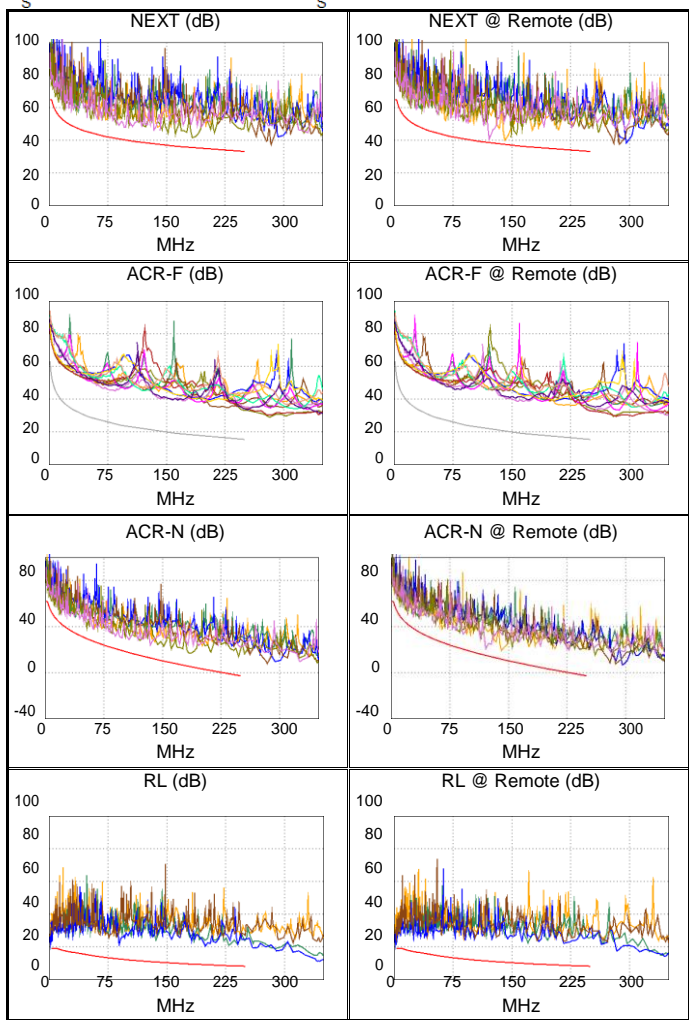


93.8 m



Worst Case Margin Worst Case Value

	MAIN	SR	MAIN	SR
PASS				
Worst Pair	3,6-7,8	4,5-7,8	3,6-7,8	4,5-7,8
NEXT (dB)	6.2	0.5 *	6.2	0.5
Freq. (MHz)	183.0	122.0	183.0	122.0
Limit (dB)	35.4	38.5	35.4	38.5
Worst Pair	7,8	4,5	7,8	4,5
PS NEXT (dB)	8.4	3.3	8.4	3.3
Freq. (MHz)	183.0	122.0	183.0	122.0
Limit (dB)	32.5	35.6	32.5	35.6
PASS				
Worst Pair	3,6-4,5	4,5-3,6	3,6-4,5	4,5-3,6
ACR-F (dB)	17.6	17.4	17.6	17.4
Freq. (MHz)	250.0	250.0	250.0	250.0
Limit (dB)	15.3	15.3	15.3	15.3
Worst Pair	3,6	3,6	3,6	3,6
PS ACR-F (dB)	18.6	18.1	18.6	18.1
Freq. (MHz)	250.0	250.0	250.0	250.0
Limit (dB)	12.3	12.3	12.3	12.3
N/A				
Worst Pair	3,6-7,8	4,5-7,8	3,6-7,8	3,6-7,8
ACR-N (dB)	8.1	4.2	16.5	20.9
Freq. (MHz)	19.3	122.0	247.5	248.0
Limit (dB)	43.1	14.7	-2.5	-2.6
Worst Pair	7,8	7,8	7,8	7,8
PS ACR-N (dB)	9.8	7.1	18.5	19.6
Freq. (MHz)	19.4	122.0	247.5	229.5
Limit (dB)	40.3	11.8	-5.5	-3.4
PASS				
Worst Pair	4,5	4,5	3,6	4,5
RL (dB)	7.5	6.3	11.5	12.6
Freq. (MHz)	3.8	3.8	230.0	225.0
Limit (dB)	19.0	19.0	8.4	8.5



Compliant Network Standards:

10BASE-T	100BASE-TX	100BASE-T4
1000BASE-T	2.5GBASE-T	5GBASE-T
ATM-25	ATM-155	ATM-155
100VG-AnyLan	TR-4	TR-16 Active

* Measurement is within the accuracy limits of the instrument.