



**Cable ID: LEGRAND-CAT6 UTP-CH**

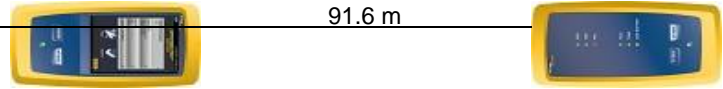
Date / Time: 12/15/2019 15:05:56  
**Headroom 4.3 dB (NEXT 12-36)**  
**Test Limit: TIA Cat 6 Channel**  
 Cable Type: Cat 6 U/UTP  
 NVP: 69.0%

Operator: MORADI  
 Software Version: V6.2 Build 1  
 Limits Version: V7.2

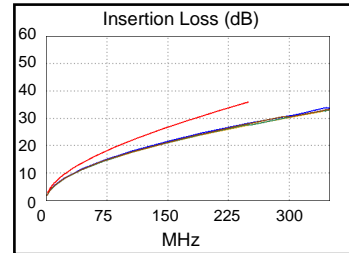
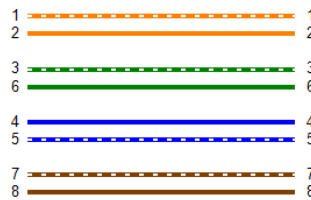
**Test Summary: PASS**

Model: DSX-5000  
 Main S/N: 2934032  
 Remote S/N: 2934034  
 Main Adapter: DSX-CHA004  
 Remote Adapter: DSX-CHA004

Length (m), Limit 100.0	[Pair 78]	91.6
Prop. Delay (ns), Limit 555	[Pair 45]	466
Delay Skew (ns), Limit 50	[Pair 45]	23
Resistance (ohms)	[Pair 12]	15.35
Insertion Loss Margin (dB)	[Pair 45]	7.7
Frequency (MHz)	[Pair 45]	248.5
Limit (dB)	[Pair 45]	35.8

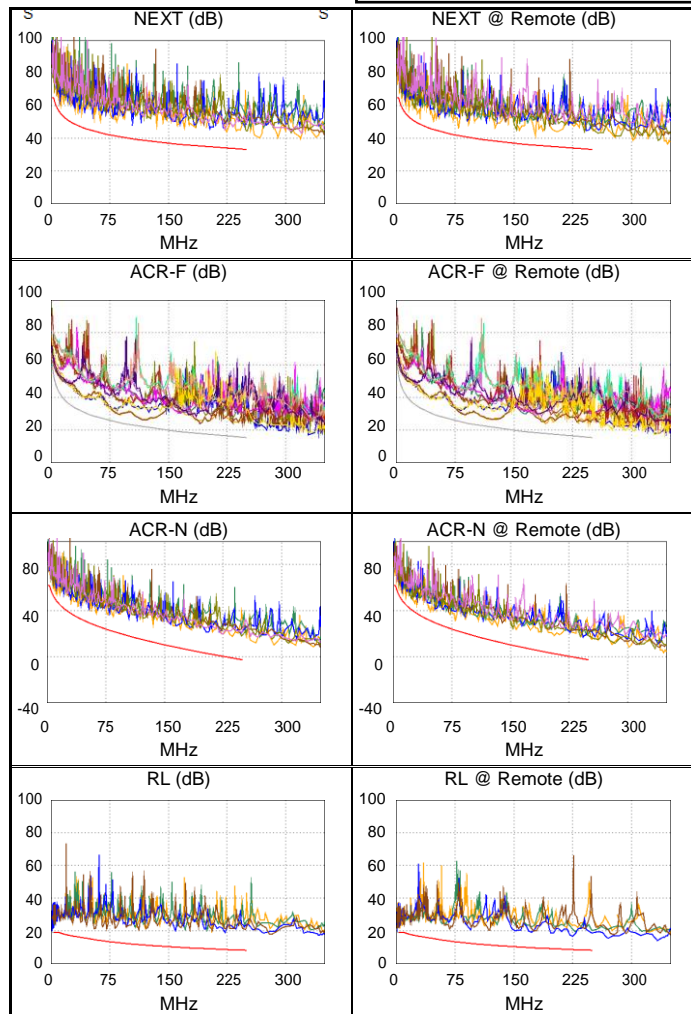


Wire Map (T568B)  
**PASS**



Worst Case Margin Worst Case Value

	MAIN	SR	MAIN	SR
<b>PASS</b>				
Worst Pair	12-36	12-36	12-36	12-36
<b>NEXT (dB)</b>	4.7	4.3	10.0	6.1
Freq. (MHz)	12.3	16.1	224.5	177.5
Limit (dB)	55.1	53.2	33.9	35.7
Worst Pair	36	12	78	12
<b>PS NEXT (dB)</b>	6.8	5.9	11.4	8.1
Freq. (MHz)	4.3	10.9	250.0	177.0
Limit (dB)	60.1	53.4	30.2	32.8
<b>PASS</b>				
Worst Pair	36-12	12-36	36-12	12-36
<b>ACR-F (dB)</b>	4.4	4.4	8.1	8.0
Freq. (MHz)	116.0	116.0	242.0	242.0
Limit (dB)	22.0	22.0	15.6	15.6
Worst Pair	12	12	12	36
<b>PS ACR-F (dB)</b>	5.7	6.1	10.6	8.4
Freq. (MHz)	83.8	82.0	242.0	203.0
Limit (dB)	21.8	22.0	12.6	14.1
<b>N/A</b>				
Worst Pair	12-36	12-36	36-78	36-78
<b>ACR-N (dB)</b>	5.9	5.8	19.6	18.4
Freq. (MHz)	12.3	16.1	250.0	240.0
Limit (dB)	48.1	45.1	-2.8	-1.7
Worst Pair	36	12	78	36
<b>PS ACR-N (dB)</b>	7.5	6.9	19.8	20.6
Freq. (MHz)	4.3	7.3	250.0	250.0
Limit (dB)	56.0	50.9	-5.8	-5.8
<b>PASS</b>				
Worst Pair	78	12	45	45
<b>RL (dB)</b>	5.9	5.6	10.4	7.8
Freq. (MHz)	55.8	3.6	222.5	224.5
Limit (dB)	14.5	19.0	8.5	8.5



Compliant Network Standards:  
 10BASE-T      100BASE-TX      100BASE-T4  
 1000BASE-T    ATM-25            ATM-51  
 ATM-155        100VG-AnyLan   TR-4  
 TR-16 Active    TR-16 Passive