



Cable ID: S1-LEGRAND CAT6 UTP 47 G2-PERM

Test Summary: PASS

Test Limit: TIA Cat 6 Perm. Link

Main: Versiv

Remote: Versiv

Limits Version: V7.6

S/N: 2934032

S/N: 2468333

Date / Time: 11/13/2021 19:57:08

Software Version: V6.6 Build 2

Software Version: V6.6 Build 2

Operator: MORADI

Calibration Date: 01/25/2020

Calibration Date: 08/12/2013

Headroom 8.7 dB (NEXT 1,2-7,8)

Adapter: DSX-5000 (DSX-PLA004)

Adapter: DSX-5000R (DSX-PLA004)

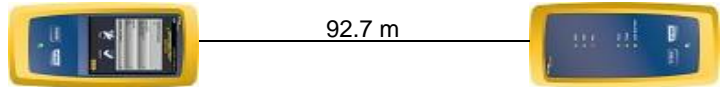
Cable Type: Cat 6 U/UTP

S/N: 3126110

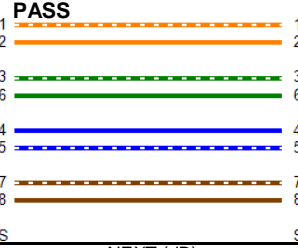
S/N: 3126109

NVP: 69.0%

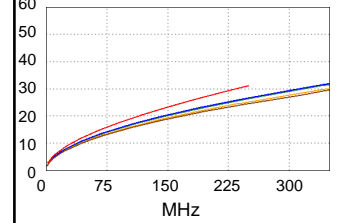
Length (m), Limit 90.0	[Pair 7,8]	92.7
Prop. Delay (ns), Limit 498	[Pair 4,5]	476
Delay Skew (ns), Limit 44	[Pair 4,5]	28
Resistance (ohms)	[Pair 3,6]	13.50
Insertion Loss Margin (dB)	[Pair 4,5]	4.5
Frequency (MHz)	[Pair 4,5]	250.0
Limit (dB)	[Pair 4,5]	31.1



Wire Map (T568B)

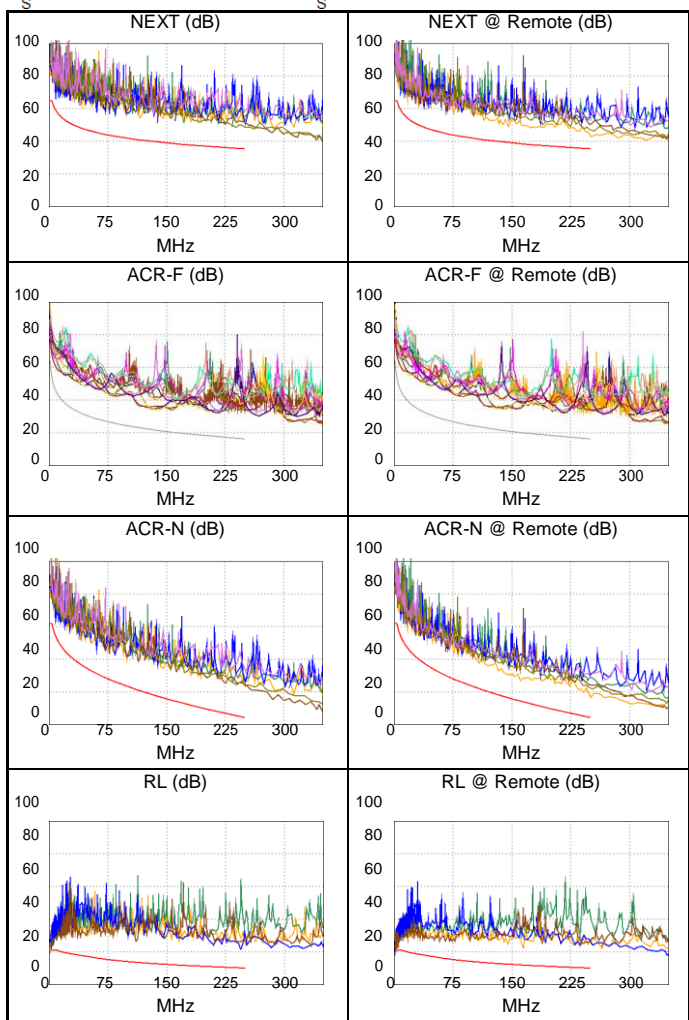


Insertion Loss (dB)



Worst Case Margin Worst Case Value

PASS	MAIN	SR	MAIN	SR
Worst Pair	1,2-7,8	1,2-3,6	3,6-7,8	1,2-3,6
NEXT (dB)	8.7	8.8	12.3	8.8
Freq. (MHz)	8.3	250.0	241.0	250.0
Limit (dB)	59.1	35.3	35.6	35.3
Worst Pair	1,2	3,6	3,6	3,6
PS NEXT (dB)	10.2	9.0	12.6	9.0
Freq. (MHz)	8.1	250.0	241.5	250.0
Limit (dB)	56.9	32.7	33.0	32.7
PASS	MAIN	SR	MAIN	SR
Worst Pair	7,8-1,2	7,8-1,2	7,8-3,6	7,8-3,6
ACR-F (dB)	12.6	12.7	14.4	14.3
Freq. (MHz)	138.0	133.0	214.5	214.5
Limit (dB)	21.4	21.7	17.6	17.6
Worst Pair	1,2	1,2	7,8	3,6
PS ACR-F (dB)	14.6	14.7	15.9	16.8
Freq. (MHz)	138.5	132.0	217.0	245.5
Limit (dB)	18.4	18.8	14.5	13.4
N/A	MAIN	SR	MAIN	SR
Worst Pair	1,2-7,8	1,2-7,8	3,6-7,8	1,2-3,6
ACR-N (dB)	9.5	11.6	18.6	13.7
Freq. (MHz)	8.3	8.3	241.0	250.0
Limit (dB)	54.1	54.1	5.1	4.2
Worst Pair	1,2	7,8	3,6	3,6
PS ACR-N (dB)	10.9	12.8	18.0	13.9
Freq. (MHz)	8.1	8.4	250.0	250.0
Limit (dB)	51.9	51.6	1.6	1.6
PASS	MAIN	SR	MAIN	SR
Worst Pair	7,8	1,2	4,5	1,2
RL (dB)	4.6	4.8	11.5	10.6
Freq. (MHz)	4.8	4.6	244.5	165.0
Limit (dB)	21.0	21.0	10.1	11.8



Compliant Network Standards:

10BASE-T	100BASE-TX	100BASE-T4
100BASE-T	2.5GBASE-T	5GBASE-T
ATM-25	ATM-51	ATM-155
100VG-AnyLan	TR-4	TR-16 Active
TR-16 Passive		