



**Cable ID: S1-LEGRAND CAT6 UTP 47 G1-PERM**

**Test Summary: PASS**

Test Limit: TIA Cat 6 Perm. Link

Main: Versiv

Remote: Versiv

Limits Version: V7.6

S/N: 2934032

S/N: 2468333

Date / Time: 11/13/2021 19:01:35

Software Version: V6.6 Build 2

Software Version: V6.6 Build 2

Operator: MORADI

Calibration Date: 01/25/2020

Calibration Date: 08/12/2013

Headroom 8.1 dB (NEXT 3,6-7,8)

Adapter: DSX-5000 (DSX-PLA004)

Adapter: DSX-5000R (DSX-PLA004)

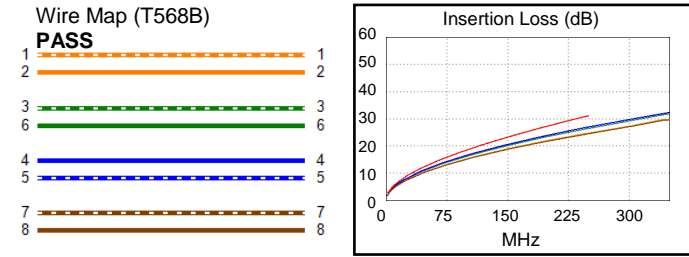
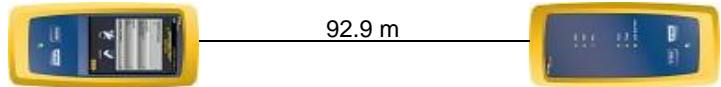
Cable Type: Cat 6 U/UTP

S/N: 3126110

S/N: 3126109

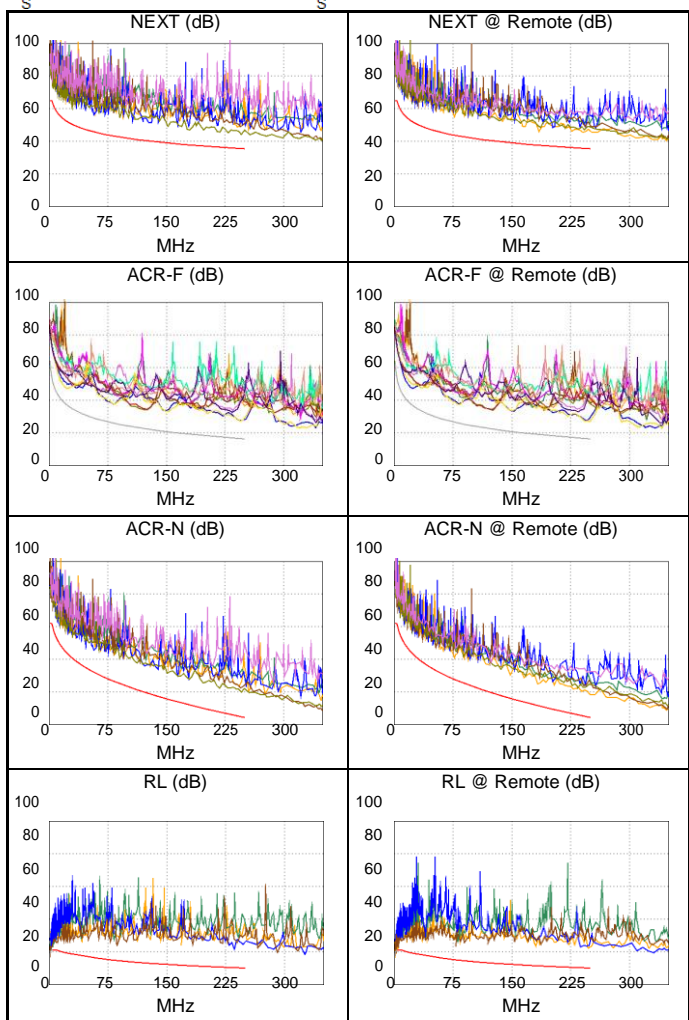
NVP: 69.0%

Length (m), Limit 90.0	[Pair 7,8]	92.9
Prop. Delay (ns), Limit 498	[Pair 4,5]	476
Delay Skew (ns), Limit 44	[Pair 4,5]	27
Resistance (ohms)	[Pair 4,5]	13.40
Insertion Loss Margin (dB)	[Pair 4,5]	4.2
Frequency (MHz)	[Pair 4,5]	250.0
Limit (dB)	[Pair 4,5]	31.1



Worst Case Margin Worst Case Value

PASS	MAIN	SR	MAIN	SR
Worst Pair	3,6-7,8	1,2-3,6	3,6-7,8	1,2-3,6
<b>NEXT (dB)</b>	8.1	8.2	8.6	9.1
Freq. (MHz)	216.5	184.0	246.0	250.0
Limit (dB)	36.4	37.5	35.5	35.3
Worst Pair	3,6	3,6	3,6	3,6
<b>PS NEXT (dB)</b>	9.4	9.3	9.4	9.4
Freq. (MHz)	245.5	241.0	245.5	250.0
Limit (dB)	32.8	33.0	32.8	32.7
PASS	MAIN	SR	MAIN	SR
Worst Pair	7,8-1,2	1,2-7,8	1,2-7,8	7,8-1,2
<b>ACR-F (dB)</b>	9.9	10.0	11.0	10.8
Freq. (MHz)	20.5	20.3	249.5	250.0
Limit (dB)	38.0	38.1	16.2	16.2
Worst Pair	1,2	7,8	1,2	1,2
<b>PS ACR-F (dB)</b>	12.8	12.3	13.6	13.5
Freq. (MHz)	20.5	20.3	245.0	250.0
Limit (dB)	35.0	35.1	13.4	13.2
N/A	MAIN	SR	MAIN	SR
Worst Pair	3,6-7,8	1,2-7,8	3,6-7,8	1,2-3,6
<b>ACR-N (dB)</b>	12.1	11.8	15.2	13.8
Freq. (MHz)	4.1	12.8	246.0	250.0
Limit (dB)	60.3	49.9	4.6	4.2
Worst Pair	3,6	1,2	3,6	3,6
<b>PS ACR-N (dB)</b>	11.9	11.9	13.9	14.1
Freq. (MHz)	4.3	12.8	245.5	250.0
Limit (dB)	57.8	47.5	2.1	1.6
PASS	MAIN	SR	MAIN	SR
Worst Pair	7,8	1,2	4,5	1,2
<b>RL (dB)</b>	3.6	3.3	11.3	12.1
Freq. (MHz)	4.8	4.6	236.0	247.5
Limit (dB)	21.0	21.0	10.3	10.1



Compliant Network Standards:

10BASE-T	100BASE-TX	100BASE-T4
100BASE-T	2.5GBASE-T	5GBASE-T
ATM-25	ATM-51	ATM-155
100VG-AnyLan	TR-4	TR-16 Active