



**Cable ID: S1-LEGRAND CAT6 SFTP-PERM**

Test Limit: TIA Cat 6 Perm. Link

Limits Version: V7.6

Date / Time: 09/05/2021 12:41:42

Operator: MORADI

Headroom 5.9 dB (NEXT 1,2-3,6)

Cable Type: Cat 6 F/UTP

NVP: 70.0%

Main: Versiv

S/N: 2934032

Software Version: V6.6 Build 2

Calibration Date: 01/25/2020

Adapter: DSX-5000 (DSX-PLA004)

S/N: 3126109

**Test Summary: PASS**

Remote: Versiv

S/N: 2468333

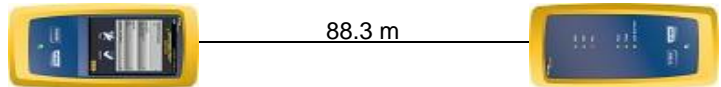
Software Version: V6.6 Build 2

Calibration Date: 08/12/2013

Adapter: DSX-5000R (DSX-PLA004)

S/N: 3126110

Length (m), Limit 90.0	[Pair 7,8]	88.3
Prop. Delay (ns), Limit 498	[Pair 4,5]	454
Delay Skew (ns), Limit 44	[Pair 4,5]	33
Resistance (ohms)	[Pair 4,5]	13.36
Insertion Loss Margin (dB)	[Pair 4,5]	4.4
Frequency (MHz)	[Pair 4,5]	250.0
Limit (dB)	[Pair 4,5]	31.1

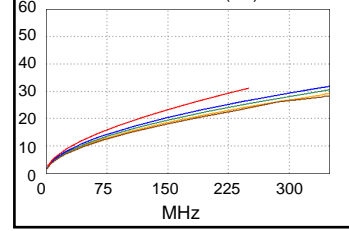


Wire Map (T568B)

**PASS**



Insertion Loss (dB)

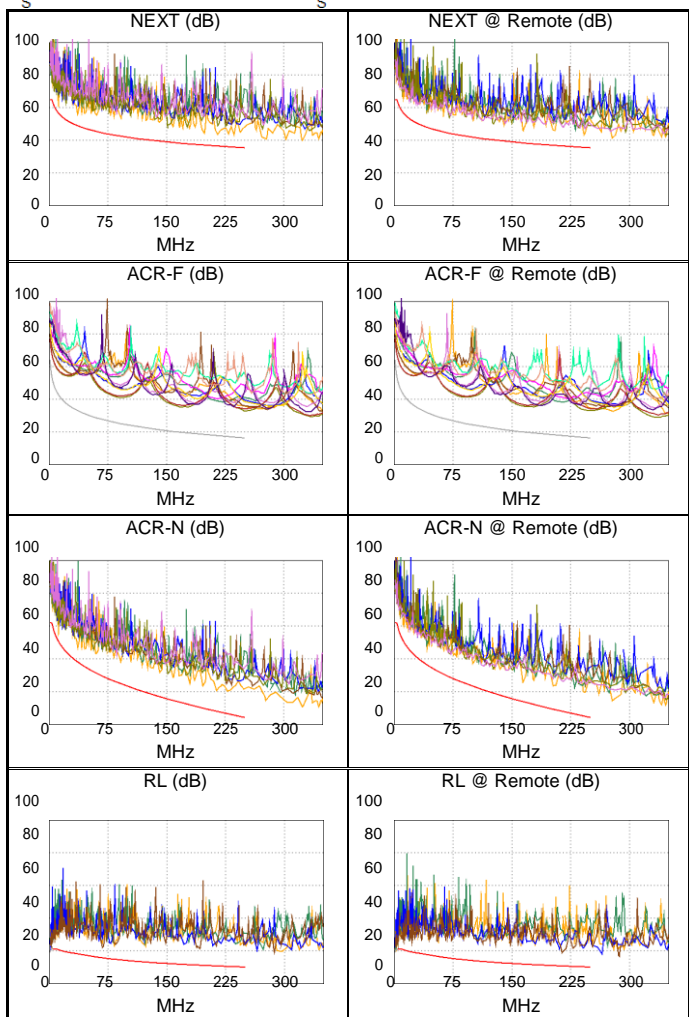


Worst Case Margin Worst Case Value

PASS	MAIN	SR	MAIN	SR
Worst Pair	1,2-3,6	1,2-3,6	1,2-3,6	1,2-3,6
<b>NEXT (dB)</b>	5.9	7.6	6.8	7.8
Freq. (MHz)	11.9	164.5	215.0	242.0
Limit (dB)	56.7	38.3	36.4	35.6
Worst Pair	3,6	1,2	3,6	1,2
<b>PS NEXT (dB)</b>	7.5	8.6	8.7	9.4
Freq. (MHz)	11.9	41.8	229.0	242.0
Limit (dB)	54.3	45.5	33.3	32.9
PASS	MAIN	SR	MAIN	SR
Worst Pair	3,6-4,5	3,6-4,5	3,6-4,5	3,6-4,5
<b>ACR-F (dB)</b>	14.0	14.1	16.7	16.7
Freq. (MHz)	6.0	6.4	249.5	250.0
Limit (dB)	48.6	48.1	16.2	16.2
Worst Pair	3,6	3,6	3,6	3,6
<b>PS ACR-F (dB)</b>	14.0	14.2	17.6	18.0
Freq. (MHz)	1.0	1.0	241.5	249.5
Limit (dB)	61.2	61.2	13.5	13.2
N/A	MAIN	SR	MAIN	SR
Worst Pair	1,2-3,6	1,2-3,6	1,2-3,6	1,2-3,6
<b>ACR-N (dB)</b>	6.7	8.8	13.2	13.3
Freq. (MHz)	11.8	11.9	236.5	242.0
Limit (dB)	50.7	50.6	5.6	5.0
Worst Pair	3,6	3,6	3,6	3,6
<b>PS ACR-N (dB)</b>	8.4	10.2	13.9	15.1
Freq. (MHz)	11.9	11.8	229.0	243.5
Limit (dB)	48.2	48.4	3.8	2.3
PASS	MAIN	SR	MAIN	SR
Worst Pair	7,8	1,2	7,8	7,8
<b>RL (dB)</b>	6.2	3.2	10.1	8.1
Freq. (MHz)	68.0	4.9	192.0	214.0
Limit (dB)	15.7	21.0	11.2	10.7

Compliant Network Standards:

10BASE-T	100BASE-TX	100BASE-T4
1000BASE-T	2.5GBASE-T	5GBASE-T
ATM-25	ATM-51	ATM-155
100VG-AnyLan	TR-4	TR-16 Active
TR-16 Passive		





**Cable ID: S2-LEGRAND CAT6 SFTP-PERM**

Test Limit: TIA Cat 6 Perm. Link

Limits Version: V7.6

Date / Time: 09/05/2021 13:01:54

Operator: MORADI

Headroom 4.9 dB (NEXT 1,2-3,6)

Cable Type: Cat 6 F/UTP

NVP: 70.0%

Main: Versiv

S/N: 2934032

Software Version: V6.6 Build 2

Calibration Date: 01/25/2020

Adapter: DSX-5000 (DSX-PLA004)

S/N: 3126109

**Test Summary: PASS**

Remote: Versiv

S/N: 2468333

Software Version: V6.6 Build 2

Calibration Date: 08/12/2013

Adapter: DSX-5000R (DSX-PLA004)

S/N: 3126110

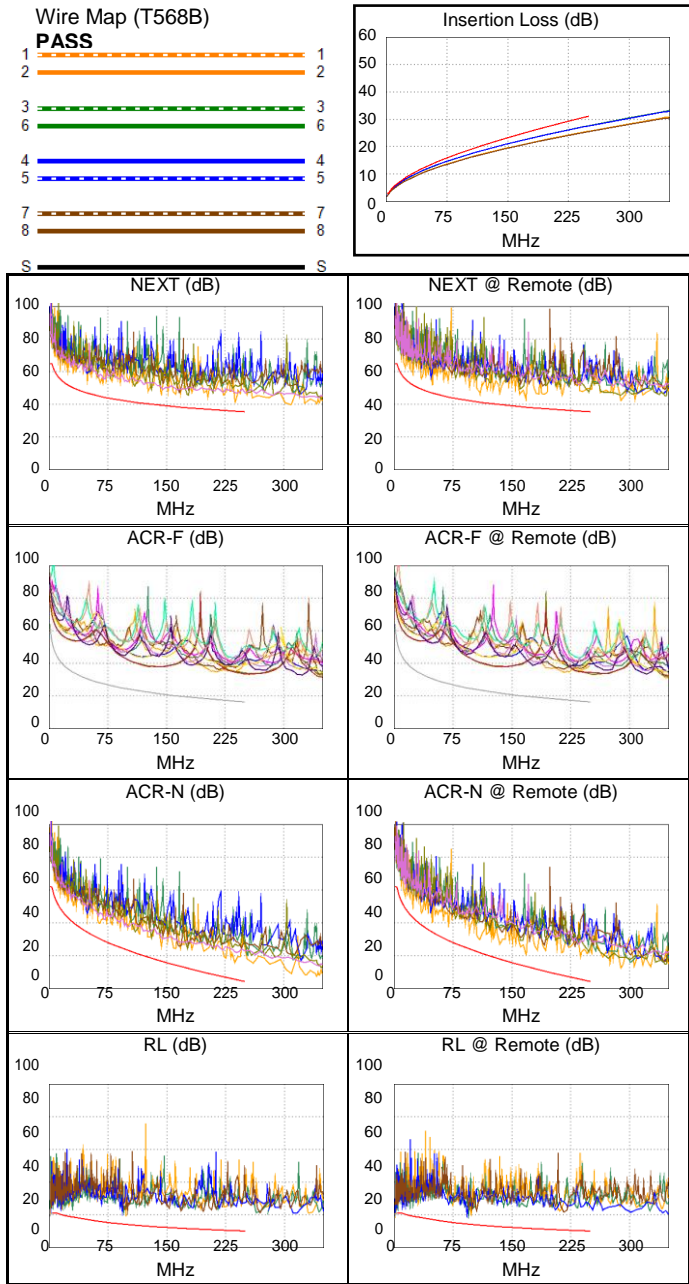
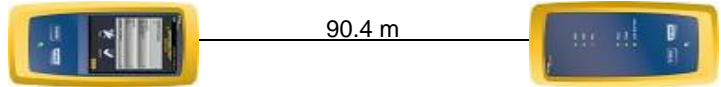
Length (m), Limit 90.0	[Pair 7,8]	90.4
Prop. Delay (ns), Limit 498	[Pair 4,5]	461
Delay Skew (ns), Limit 44	[Pair 4,5]	30
Resistance (ohms)	[Pair 4,5]	13.46
Insertion Loss Margin (dB)	[Pair 3,6]	3.5
Frequency (MHz)	[Pair 3,6]	250.0
Limit (dB)	[Pair 3,6]	31.1

Worst Case Margin Worst Case Value

PASS	MAIN	SR	MAIN	SR
Worst Pair	1,2-3,6	1,2-3,6	1,2-3,6	1,2-3,6
<b>NEXT (dB)</b>	5.6	4.9	5.6	4.9
Freq. (MHz)	238.0	168.0	238.0	168.0
Limit (dB)	35.7	38.2	35.7	38.2
Worst Pair	3,6	1,2	3,6	1,2
<b>PS NEXT (dB)</b>	7.7	6.9	7.8	7.2
Freq. (MHz)	238.0	48.5	238.5	168.0
Limit (dB)	33.1	44.4	33.0	35.6
PASS	MAIN	SR	MAIN	SR
Worst Pair	4,5-3,6	3,6-4,5	4,5-3,6	3,6-4,5
<b>ACR-F (dB)</b>	15.9	15.9	17.1	17.1
Freq. (MHz)	127.5	127.5	250.0	250.0
Limit (dB)	22.1	22.1	16.2	16.2
Worst Pair	3,6	3,6	3,6	3,6
<b>PS ACR-F (dB)</b>	16.4	16.6	17.7	18.1
Freq. (MHz)	1.0	1.1	240.0	239.5
Limit (dB)	61.2	60.2	13.6	13.6
N/A	MAIN	SR	MAIN	SR
Worst Pair	1,2-3,6	1,2-3,6	1,2-3,6	1,2-3,6
<b>ACR-N (dB)</b>	8.1	5.5	8.8	13.1
Freq. (MHz)	69.3	13.8	238.0	244.5
Limit (dB)	29.2	49.1	5.5	4.8
Worst Pair	1,2	3,6	3,6	3,6
<b>PS ACR-N (dB)</b>	9.5	7.4	11.0	14.2
Freq. (MHz)	48.8	13.8	238.5	244.5
Limit (dB)	31.8	46.8	2.8	2.2
PASS	MAIN	SR	MAIN	SR
Worst Pair	3,6	4,5	3,6	4,5
<b>RL (dB)</b>	5.2	4.3	7.5	5.3
Freq. (MHz)	29.8	3.5	95.3	93.3
Limit (dB)	18.6	21.0	14.2	14.3

Compliant Network Standards:

10BASE-T	100BASE-TX	100BASE-T4
1000BASE-T	2.5GBASE-T	5GBASE-T
ATM-25	ATM-155	ATM-155
100VG-AnyLan	TR-4	TR-16 Active
TR-16 Passive		





**Cable ID: S3-LEGRAND CAT6 SFTP-PERM**

Test Limit: TIA Cat 6 Perm. Link

Limits Version: V7.6

Date / Time: 09/05/2021 13:20:06

Operator: MORADI

Headroom 4.1 dB (NEXT 3,6-7,8)

Cable Type: Cat 6 F/UTP

NVP: 70.0%

Main: Versiv

S/N: 2934032

Software Version: V6.6 Build 2

Calibration Date: 01/25/2020

Adapter: DSX-5000 (DSX-PLA004)

S/N: 3126109

**Test Summary: PASS**

Remote: Versiv

S/N: 2468333

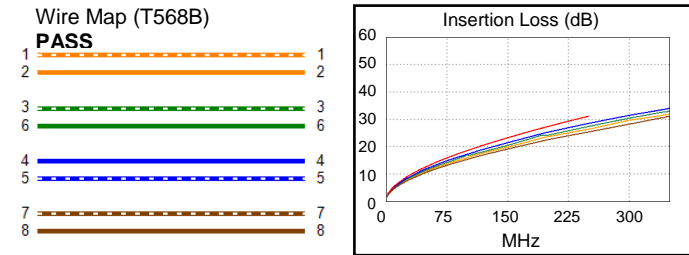
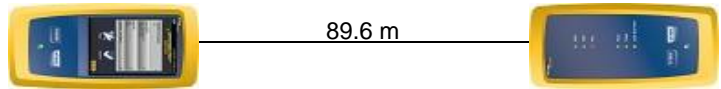
Software Version: V6.6 Build 2

Calibration Date: 08/12/2013

Adapter: DSX-5000R (DSX-PLA004)

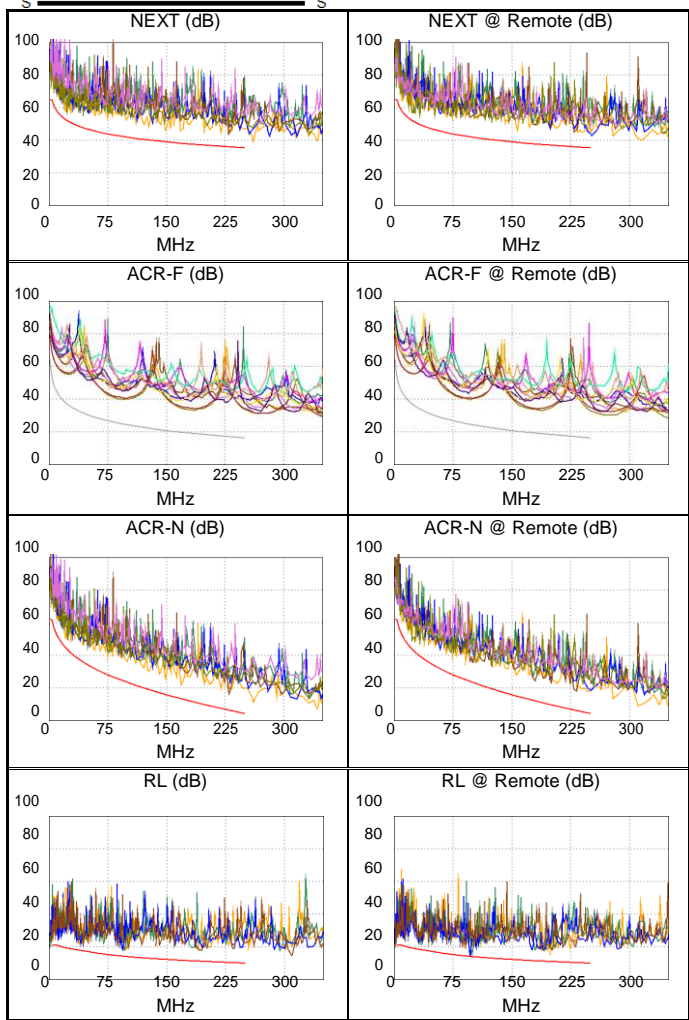
S/N: 3126110

Length (m), Limit 90.0	[Pair 7,8]	89.6
Prop. Delay (ns), Limit 498	[Pair 4,5]	461
Delay Skew (ns), Limit 44	[Pair 4,5]	34
Resistance (ohms)	[Pair 4,5]	13.46
Insertion Loss Margin (dB)	[Pair 4,5]	2.7
Frequency (MHz)	[Pair 4,5]	250.0
Limit (dB)	[Pair 4,5]	31.1



Worst Case Margin Worst Case Value

PASS	MAIN	SR	MAIN	SR
Worst Pair	1,2-3,6	3,6-7,8	3,6-4,5	1,2-3,6
<b>NEXT (dB)</b>	4.9	4.1	7.4	8.0
Freq. (MHz)	20.6	22.8	230.0	245.5
Limit (dB)	52.9	52.2	35.9	35.5
Worst Pair	3,6	3,6	3,6	1,2
<b>PS NEXT (dB)</b>	5.6	5.1	7.9	8.8
Freq. (MHz)	22.8	22.9	230.0	246.0
Limit (dB)	49.8	49.7	33.3	32.8
PASS	MAIN	SR	MAIN	SR
Worst Pair	3,6-4,5	3,6-4,5	3,6-4,5	3,6-4,5
<b>ACR-F (dB)</b>	14.2	14.4	14.2	16.6
Freq. (MHz)	182.5	189.0	182.5	250.0
Limit (dB)	19.0	18.7	19.0	16.2
Worst Pair	3,6	3,6	3,6	3,6
<b>PS ACR-F (dB)</b>	16.5	16.5	18.4	16.7
Freq. (MHz)	181.0	94.8	250.0	185.5
Limit (dB)	16.0	21.7	13.2	15.8
N/A	MAIN	SR	MAIN	SR
Worst Pair	1,2-3,6	3,6-7,8	3,6-4,5	1,2-3,6
<b>ACR-N (dB)</b>	5.8	5.6	10.0	11.7
Freq. (MHz)	20.6	22.9	230.0	245.5
Limit (dB)	44.8	43.7	6.3	4.7
Worst Pair	3,6	3,6	3,6	1,2
<b>PS ACR-N (dB)</b>	6.5	5.9	11.6	13.4
Freq. (MHz)	22.8	22.9	231.5	246.0
Limit (dB)	41.3	41.3	3.5	2.0
PASS	MAIN	SR	MAIN	SR
Worst Pair	3,6	4,5	3,6	4,5
<b>RL (dB)</b>	3.6	0.5 *	3.6	0.5
Freq. (MHz)	95.8	96.8	95.8	96.8
Limit (dB)	14.2	14.1	14.2	14.1



Compliant Network Standards:

10BASE-T	100BASE-TX	100BASE-T4
1000BASE-T	2.5GBASE-T	5GBASE-T
ATM-25	ATM-155	ATM-155
100VG-AnyLan	TR-4	TR-16 Active

\* Measurement is within the accuracy limits of the instrument.





**Cable ID: S4-LEGRAND CAT6 SFTP-PERM**

Test Limit: TIA Cat 6 Perm. Link

Limits Version: V7.6

Date / Time: 09/05/2021 13:41:23

Operator: MORADI

Headroom 7.1 dB (NEXT 1,2-3,6)

Cable Type: Cat 6 F/UTP

NVP: 70.0%

Main: Versiv

S/N: 2934032

Software Version: V6.6 Build 2

Calibration Date: 01/25/2020

Adapter: DSX-5000 (DSX-PLA004)

S/N: 3126109

**Test Summary: PASS**

Remote: Versiv

S/N: 2468333

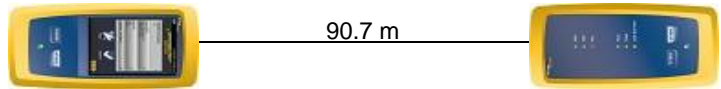
Software Version: V6.6 Build 2

Calibration Date: 08/12/2013

Adapter: DSX-5000R (DSX-PLA004)

S/N: 3126110

Length (m), Limit 90.0	[Pair 7,8]	90.7
Prop. Delay (ns), Limit 498	[Pair 4,5]	462
Delay Skew (ns), Limit 44	[Pair 4,5]	30
Resistance (ohms)	[Pair 4,5]	13.50
Insertion Loss Margin (dB)	[Pair 4,5]	3.4
Frequency (MHz)	[Pair 4,5]	250.0
Limit (dB)	[Pair 4,5]	31.1

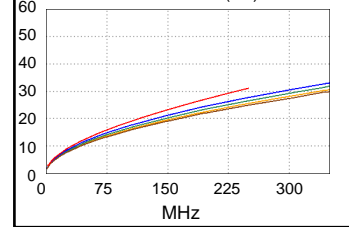


Wire Map (T568B)

**PASS**

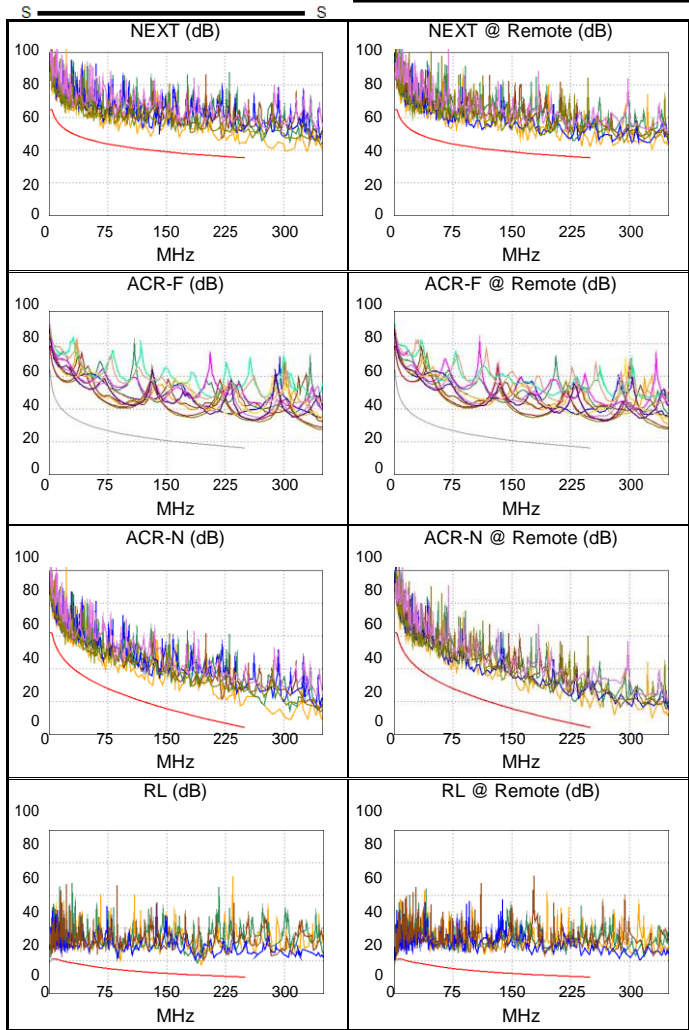


Insertion Loss (dB)



Worst Case Margin Worst Case Value

<b>PASS</b>	MAIN	SR	MAIN	SR
Worst Pair	1,2-3,6	1,2-3,6	1,2-3,6	1,2-3,6
<b>NEXT (dB)</b>	8.1	7.1	8.1	7.1
Freq. (MHz)	244.0	250.0	244.0	250.0
Limit (dB)	35.5	35.3	35.5	35.3
Worst Pair	3,6	3,6	1,2	3,6
<b>PS NEXT (dB)</b>	9.6	8.5	9.8	8.5
Freq. (MHz)	71.5	239.0	244.0	239.0
Limit (dB)	41.7	33.0	32.9	33.0
<b>PASS</b>	MAIN	SR	MAIN	SR
Worst Pair	3,6-4,5	3,6-4,5	3,6-4,5	3,6-4,5
<b>ACR-F (dB)</b>	15.2	15.5	17.4	17.5
Freq. (MHz)	87.3	88.0	250.0	249.5
Limit (dB)	25.4	25.3	16.2	16.2
Worst Pair	3,6	3,6	3,6	3,6
<b>PS ACR-F (dB)</b>	15.9	15.8	18.2	18.4
Freq. (MHz)	89.0	93.8	250.0	250.0
Limit (dB)	22.2	21.8	13.2	13.2
<b>N/A</b>	MAIN	SR	MAIN	SR
Worst Pair	1,2-3,6	1,2-3,6	1,2-3,6	1,2-3,6
<b>ACR-N (dB)</b>	10.3	8.8	12.6	11.7
Freq. (MHz)	71.5	71.5	244.0	250.0
Limit (dB)	28.7	28.7	4.8	4.2
Worst Pair	3,6	3,6	3,6	3,6
<b>PS ACR-N (dB)</b>	11.3	10.6	14.8	13.9
Freq. (MHz)	71.5	71.5	244.0	250.0
Limit (dB)	26.2	26.2	2.2	1.6
<b>PASS</b>	MAIN	SR	MAIN	SR
Worst Pair	1,2	1,2	1,2	4,5
<b>RL (dB)</b>	5.3	4.9	6.3	12.8
Freq. (MHz)	90.8	3.6	193.5	239.0
Limit (dB)	14.4	21.0	11.1	10.2



Compliant Network Standards:

10BASE-T	100BASE-TX	100BASE-T4
1000BASE-T	2.5GBASE-T	5GBASE-T
ATM-25	ATM-155	ATM-155
100VG-AnyLan	TR-4	TR-16 Active
TR-16 Passive		



**Cable ID: S4-LEGRAND CAT6A SFTP-PERM**

Test Limit: TIA Cat 6A Perm. Link

Limits Version: V7.6

Date / Time: 09/05/2021 13:40:29

Operator: MORADI

Headroom 4.3 dB (NEXT 3,6-7,8)

Cable Type: Cat 6A F/UTP

NVP: 74.0%

Main: Versiv

S/N: 2934032

Software Version: V6.6 Build 2

Calibration Date: 01/25/2020

Adapter: DSX-5000 (DSX-PLA004)

S/N: 3126109

**Test Summary: PASS**

Remote: Versiv

S/N: 2468333

Software Version: V6.6 Build 2

Calibration Date: 08/12/2013

Adapter: DSX-5000R (DSX-PLA004)

S/N: 3126110

Length (m), Limit 90.0	[Pair 7,8]	95.8
Prop. Delay (ns), Limit 498	[Pair 4,5]	462
Delay Skew (ns), Limit 44	[Pair 4,5]	30
Resistance (ohms)	[Pair 4,5]	13.46
Insertion Loss Margin (dB)	[Pair 4,5]	3.2
Frequency (MHz)	[Pair 4,5]	500.0
Limit (dB)	[Pair 4,5]	43.8

Worst Case Margin Worst Case Value

PASS	MAIN	SR	MAIN	SR
Worst Pair	1,2-3,6	3,6-7,8	3,6-7,8	3,6-7,8
<b>NEXT (dB)</b>	4.7	4.3	8.2	4.3
Freq. (MHz)	303.0	486.0	492.0	486.0
Limit (dB)	33.9	27.1	26.9	27.1
Worst Pair	3,6	3,6	3,6	3,6
<b>PS NEXT (dB)</b>	6.5	6.2	9.0	6.2
Freq. (MHz)	303.0	486.0	492.0	486.0
Limit (dB)	31.3	24.2	24.0	24.2
PASS	MAIN	SR	MAIN	SR
Worst Pair	3,6-4,5	3,6-4,5	3,6-4,5	3,6-4,5
<b>ACR-F (dB)</b>	14.1	14.1	14.6	14.5
Freq. (MHz)	352.0	356.0	447.0	432.0
Limit (dB)	13.3	13.2	11.2	11.5
Worst Pair	3,6	3,6	4,5	4,5
<b>PS ACR-F (dB)</b>	16.0	15.8	17.3	17.7
Freq. (MHz)	94.8	94.8	448.0	450.0
Limit (dB)	21.7	21.7	8.2	8.1
N/A	MAIN	SR	MAIN	SR
Worst Pair	1,2-3,6	1,2-3,6	3,6-4,5	3,6-7,8
<b>ACR-N (dB)</b>	8.2	8.6	15.2	11.4
Freq. (MHz)	303.0	71.5	500.0	486.0
Limit (dB)	1.0	29.1	-17.1	-16.0
Worst Pair	3,6	3,6	3,6	3,6
<b>PS ACR-N (dB)</b>	10.0	10.4	13.8	10.9
Freq. (MHz)	303.0	71.5	492.0	486.0
Limit (dB)	-1.6	26.6	-19.3	-18.8
PASS	MAIN	SR	MAIN	SR
Worst Pair	1,2	1,2	1,2	4,5
<b>RL (dB)</b>	5.4	5.0	6.4	8.4
Freq. (MHz)	90.8	4.8	195.0	500.0
Limit (dB)	14.4	21.0	11.1	8.0

Compliant Network Standards:

10BASE-T	100BASE-TX	100BASE-T4
1000BASE-T	2.5GBASE-T	5GBASE-T
10GBASE-T	ATM-25	ATM-51
ATM-155	100VG-AnyLan	TR-4
TR-16 Active	TR-16 Passive	

